

Carsem's SPC Flooring

INSTALLATION GUIDELINES

Understanding SPC Flooring :

- ✓ SPC Flooring features click technology, as a floating floor system that only requires minimal hand/power tools. A quiet, fast and clean installation process. The underlayment is already attached.
- ✓ SPC Flooring is intended for interior installations only, suitable for below-grade, on –grade and above-grade installations.SPC Flooring should not be installed where the applications substrate is exposed to weather elements.
- ✓ As a floating floor, it should be allowed to expand and contract freely.Do not install cabinets and or islands on top of SPC Flooring. Permanent fixtures must be installed prior to installation of SPC Flooring.Do not put fasteners thru SPC Flooring.A minimal 5/16”-3/8” expansion space is required in all areas. If needed, fill the expansion space with a waterproof flexible silicone type sealant.
- ✓ SPC Flooring must be acclimated for a minimum of 48 hrs, a consistent room temp. of 55-80 degrees F, with a relative humidity of 35-55% should be maintained before, during and after all installations as a permanent living environment.Avoid dramatic and large temperature fluctuations.Improper storage and or acclimation of SPC Flooring may result in gapping and or buckling joints.
- ✓ SPC Flooring is not recommended for installation in sunrooms, and or saunas.
- ✓ Direct exposure to sunlight may cause fading, and or joint separation.
- ✓ The use of blinds and or drapes are recommended to help control sun and heat in these situations.
- ✓ SPC Flooring is water resistant, however, constant/prolonged exposure to excessive moisture/humidity may affect the product. Do not install SPC Flooring if the MVE is above 5 lbs/1000 ft2/24hrs using a calcium chloride test. Moisture/humidity issues must be addressed and corrected prior to commencing installation.

PRE-INSTALLATION PROCEDURES

Job Site Evaluation

- ✓ Examine the driveway and landscaping surrounding the building. Be sure that they slope away and direct water away from the foundation.
- ✓ All gutters and downspouts should be in place, directing water away from the building.
- ✓ The building should be closed in with all outside doors and windows in place.
- ✓ All concrete, masonry, framing members, drywall, paint and other "wet" work should be thoroughly dry.

- ✓ The wall coverings should be in place and the painting completed except for the final coat on the base molding. (When possible, delay installation of base molding until flooring installation is complete.)
- ✓ Basements and crawl spaces must be dry and well ventilated. (Crawl space must be a minimum of 24" from the ground to underside of joists. A ground cover of 6-8 mil black polyethylene film is essential as a vapor barrier with joints lapped six inches and taped. The crawl space should have perimeter venting to a minimum of 1.5% of the crawl space square footage. These vents should be properly located to foster cross ventilation).
- ✓ HVAC Systems must be in place and be fully operational.
- ✓ The installation site should have a consistent room temperature of 55-80 degrees F and relative humidity of 35-55% for 14 days prior, during and continually after installation for a proper living environment.
- ✓ Substrates must be checked for moisture content using the appropriate testing methods.

SUITABLE SURFACES

Lightly textured or porous surfaces; well-bonded non-cushioned sheet vinyl, vinyl tile or ceramic tile. Embossed surfaces and or grout lines may telegraph thru, so these must be filled with an appropriate Portland based leveler. Structurally sound solid wood floors, plywood and OSB. Wood substrates should be tested for moisture using an invasive moisture meter, levels must not exceed 14%. Dry, clean well-cured concrete (cured for at least 90 days prior). Test concrete for moisture and PH before installing SPC Flooring.

A calcium Chloride test for moisture should be no more than 5lbs (MVER). Document your testing results, a dry slab today does not insure the same at a future date. PH test for alkalinity should be between 7-9. All surfaces must be clean and dust free.

*****SPC Flooring may be installed over hydronic type radiant heated floors (Surface temperature must never exceed 85°F). The system should be shut off and cool prior to and during the installation. 48 hrs after installation gradually increase the temperature of the heating system in 5 degree F increments over a 24 hr period. Do not exceed 85 degrees. (Consult your specific heating system's manufacturers guidelines and specifications for applications/compatibility for this specific type flooring materials before proceeding with this type of installation).*****

SPC Flooring may be installed on all grade levels including basements. Although SPC Flooring is water resistant, moisture issues must be identified and corrected prior to any installation.

UNSUITABLE SURFACES

Damp or wet concrete, rough, uneven surfaces, carpet, cushioned underlay and cushioned vinyl. Rough, heavy textured and/or uneven surfaces may telegraph through the vinyl and distort the finished surface. This product is not suitable in rooms that could potentially flood or rooms that have damp concrete or saunas.

“INSTALLATION IMPLIES ACCEPTANCE”

WARNING: DO NOT REMOVE OLD RESILIENT VINYL FLOORING. THESE PRODUCTS MAY CONTAIN EITHER ASBESTOS FIBERS OR CRYSTALLINE SILICA, WHICH CAN BE HARMFUL TO YOUR HEALTH.

PREPARATION

SPC Flooring should be allowed to acclimatize at room temperature approx 55-80°F for 48 hours prior to installation (Excessive cold or heat can affect the size of individual planks). Must be stored horizontally, flat, no more than 6 cartons high, off the floor to allow for air circulation. Carefully check planks for any defects before installation. Check that all BATCH NUMBERS and ITEM NUMBERS are the same and that you have purchased sufficient material to complete the job.

Remove any traces of glue or residue from the previous flooring.

New concrete floors need to dry out for at least 90 days prior to installation. Wood plank floors require a plywood subfloor. All nail heads or fasteners must be driven down below the subfloor surface. Securely fasten all loose subfloors to remove squeaks and or deflection. Scrape, plane or fill uneven boards, holes, cracks or grout lines using a Portland based floor-leveling compound. Substrates/floors must be level/flat to within 1/8" in 6 ft or a maximum of 3/16" over a 10 ft span. Make sure the floor is smooth, clean and free of wax, grease, oil or dust and sealed as necessary before laying planks.

TOOLS AND SUPPLIES:

Power miter saw, contractor table saw, jamb saw, utility knife, spacers, pencil, tape measure, square, chalk line, knee pads and safety goggles, dust mask, broom and or shop vac.

GETTING STARTED:

Determine the direction that the flooring will be installed. Installation parallel to the longest wall is recommended for best visual effects. Undercut all door jambs by turning a plank upside down and using a jamb saw/handsaw to cut away the necessary height so that planks slide easily under the jambs. **Diagram 8.** Remove any existing base, quarter round, shoe molding and door thresholds. Sweep or vac to remove any debris. Floor should be installed from a minimum of 3-4 cartons at the same time to insure a good color, shade and pattern mixture. Before starting determine the width of the last row of planks, if less than 2", trim the width of your starting row of planks. Be attentive to staggering the ends of the vinyl planks a minimum of 12" for a more favorable overall appearance of the floor.

INSTALLATION:

Start in the room's left hand corner, working toward your right, by placing the first plank with the tongue side facing the wall. Use spacers along each wall to maintain a minimum expansion space of 5/16" - 3/8" between the wall and the flooring. **Diagram 1.** If the wall is irregular you may have to scribe and trim the planks.

To attach the second plank, insert the end tongue into the end groove of the very first plank at an angle of approx. 15-20 degrees. When lowered, the plank will click into place. Line up edges carefully. The planks should be flat the floor. **Diagram 2.**

Continue connecting the first row until you reach the last full plank. Fit the last plank by rotating the plank 180° with the pattern side upward, place beside row. Measure and mark (allowing for spacer), then using a square and utility knife, score the plank and snap it off, or use a power miter saw to cut. Attach as described above. **Diagram 3.**

Begin the next row with the off cut piece from the previous row to stagger the pattern. Pieces should be a minimum of 8" long and joint offset should be at least 12". **Diagram 4.**

NOTE: It is faster to assemble planks into a new row at the ends and then attach the entire row to the previous row on the long sides.

To start your second row, lay your first planks on the subfloor. Take your second plank, insert the end tongue into the end groove of the first plank at an angle of approx. 15-20 degrees. When lowered, the plank will click into place with light pressure. The planks should be flat to the floor. Make sure there are no gaps. Continue assembling the planks this way until you have your second row complete.

To attach the second row to the first row, tilt and push the side tongue into the side groove of the first panel at an angle of approx. 15-20 degrees. Lower and click into place lining the edges up carefully. Continue laying remaining planks in this manner. **Diagram 5.**

To fit the last row, lay a plank on top of the previous row, (carefully aligning the long side edges). With the tongue to the wall, lay another plank upside down on the one to be measured and use it as a ruler. Draw a line along the edge marking the cutting line for your last plank. Don't forget to allow room for your spacers/expansion space. Cut the plank and attach into position. **Diagram 6.**

Door frames, heating vents and or any other vertical obstructions also require expansion room. First cut the planks to the correct length. Then place the cut planks next to its actual position and use a square to measure the areas to be cut out and mark them. Cut out the marked points allowing the necessary expansion distance on each side. **Diagram 7.**

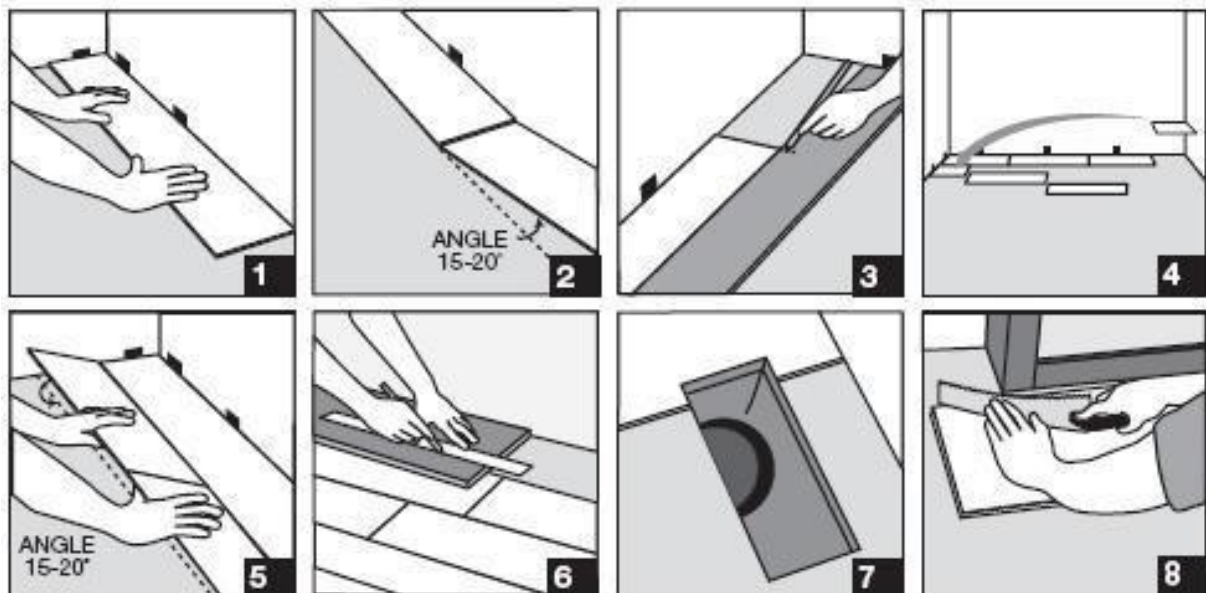
You can trim door frames by turning a plank upside down and using a jamb saw/handsaw to cut away the necessary height so that planks slide easily under the frames. **Diagram 8**

Note: Remember a 5/16-3/8" expansion space is required around all objects.

Completing the job:

Remove all spacers, install baseboards and or quarter round to cover expansion joint. Install door transition moldings, (do not nail any moldings or transitions thru SPC Flooring flooring). Sweep or vac up any remaining debris. Clean as necessary with a quality resilient vinyl floor cleaner.

To prevent surface damage avoid rolling heavy appliances and furniture directly on the floor, use plywood or hardboard if necessary.



CARE AND MAINTENTANCE

Sweep, dust mop or vac regularly to remove surface grit and dust. Use a lightly damp cloth or mop with a quality resilient vinyl floor cleaner to clean up dirt and footprints, (be careful to avoid using excessive moisture). All spills should be cleaned up immediately.

CAUTION: Planks are slippery when wet.

Do not use a wet spray micro fiber mop. Never use wax, polish, vinegar, abrasive cleaners or scouring agents as they may dull or distort the finish.

High heels can damage floors. Use protective pads under all furniture. Chair pads under all rolling chairs. Use exterior doormats at all entrance ways to keep dirt and moisture from being tracked in. Avoid use of interior rubber, foam or plastic back mats as they may discolor the floor. To prevent slippage of area rugs use an approved latex rug underlay from a reputable manufacturer. Do not allow pets with unclipped nails to scratch or damage the floor.

Do not use steam cleaners.

Avoid exposure to direct sunlight for prolonged periods of time. Use drapes or blinds to minimize direct sunlight/extreme heat during peak sunlight hours.

It's a good idea to save a few planks in case of accidental damage. Planks can be replaced or repaired by a qualified professional.

WARRANTY

This warranty applies to the original owner and or user of this material as purchased in its original condition. Owner must retain an original product end label and Valid sales receipt. This warranty is non transferable. Warranty is for replacement or refund of the SPC Flooring Plank flooring only, no labor (including the cost of labor for installation of the replacement floor) or costs incurred with loss of time, incidental expenses or any other damage. It doesn't cover damage from improper installation/failure to adhere to printed guidelines.

The warranty specifically excludes damages such as, chips, burns, tears, scratches, indentations from normal wear of any kind. Stains or reduction in gloss level due to normal use and or exterior applications. Inadequate protection, insects, rot, mold, mildew, lack of proper maintenance and improper cleaning agents. Excessive cold, Excessive heat, natural disasters. Use of any steam cleaners. Any modifications to the product beyond its original configuration will void any and all warranties. Any pieces that appear to have defects should not be installed. Manufacturer will not be responsible for any claim installed with visual defects.

The manufacturer reserves the right to have its agent/agents visit the premise where a material claim originates from to inspect the product and installation in question. To also remove samples if needed for testing and verification. Failure to provide reasonable access to the claimed area and or provide requested date/information may result in denial of the afore mentioned claim.

This Limited Warranty is null and void, if prior to installation SPC Flooring is not acclimated and if post installation, such acclimation environment is not continuously maintained and/or, written installation guidelines are not followed.

Radiant Heat: *****CAUTION*****- A surface temperature above 85F and or failure to gradually increase system temperatures will result in a non-warranted product failure.

SPC Flooring Plank Guidelines/Warranty are revised periodically and floors must be installed according to the most current guidelines at the time of installation.

Please check with your vendor for the current guidelines.

Rv3/6/18

Lifetime Residential Warranty

Our Lifetime Limited Residential Warranty for SPC Flooring Plank means that for the materials lifetime to the original purchaser/user, your floor will be free from manufacturing defects and will not wear through the wear layer in an area of 10% or more. It will not permanently stain from common household agents when installed and maintained according to Guidelines supplied with each carton. Improper installation or workmanship should be directed to the contractor who installed the floor. In the event there is a valid warranty claim, there shall be a proration from the original date of purchase.

15 Year Light Commercial Warranty

Our 15 Year Limited Commercial Warranty for SPC Flooring Plank means that for 15 years, from the date of purchase your floor will be free from manufacturing defects and will not wear through the wear layer in an area of 10% or more, or permanently stain from common household agents when installed and maintained according to instructions supplied with each carton. Improper installation or workmanship should be directed to the contractor who installed the floor. In the event there is a valid warranty claim, there shall be a proration from the original date of purchase.

Commercial areas include, but are not limited to;

Retail Areas, Sales Floors, Novelty and Boutique Shops, Showrooms and Hair Salons.

Medical Offices; Waiting Rooms, Exam Rooms, Storage Rooms.

Schools; Training and Class Rooms, Meeting Rooms and Common Areas.

Hotels; Guest Rooms, Conference Rooms, Meeting Rooms, Lobbies

General Offices; Restaurants, Break Rooms

Rental and Leased Properties and Apartments.

10 Year Light Commercial Warranty

Our 10 Year Limited Commercial Warranty for SPC Flooring Plank means that for 10 years, from the date of purchase your floor will be free from manufacturing defects and will not wear through the wear layer in an area of 10% or more, or permanently stain from common household agents when installed and maintained according to instructions supplied with each carton. Improper installation or workmanship should be directed to the contractor who installed the floor. In the event there is a valid warranty claim, there shall be a proration from the original date of purchase.

Commercial areas include, but are not limited to

Retail Areas, Sales Floors, Novelty and Boutique Shops, Showrooms and Hair Salons. Medical Offices; Waiting Rooms, Exam Rooms, Storage Rooms. Schools; Training and Class Rooms, Meeting Rooms and Common Areas. Hotels; Guest Rooms, Conference Rooms, Meeting Rooms, Lobbies General Offices; Restaurants, Break Rooms Rental and Leased Properties and Apartments.